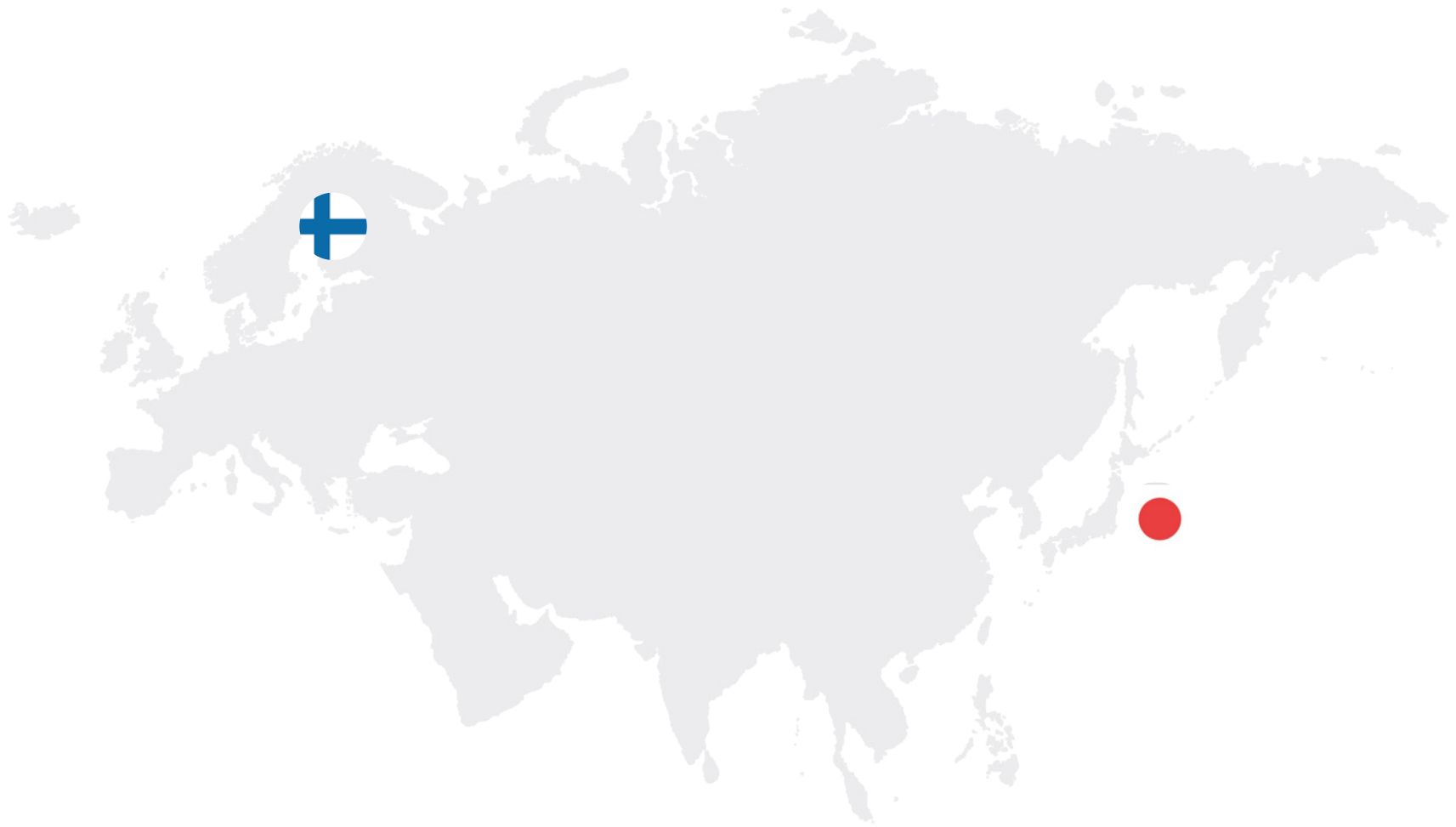


# artek

FIN-JPN Friendship Exhibition

APRIL 8-14 2019, VIA LOVANIO 6, MILANO  
EXHIBITION ARCHITECTURE  
LINDA BERGROTH 18/12/2018



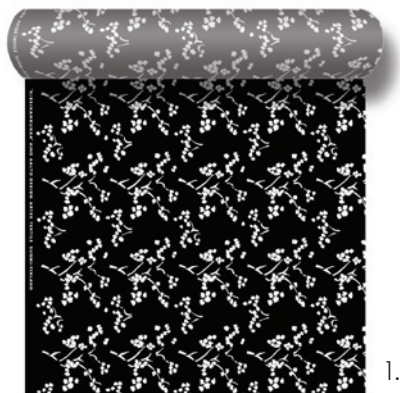
100 Years of Diplomatic Relations 



Dialogue



Designers Contribution 



1.



4.



5.



2.



3.



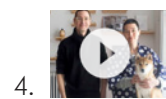
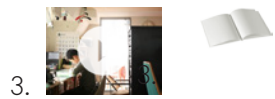
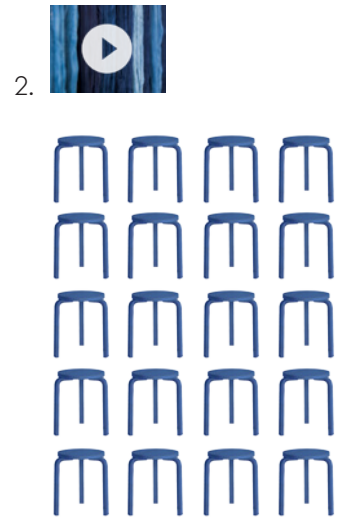
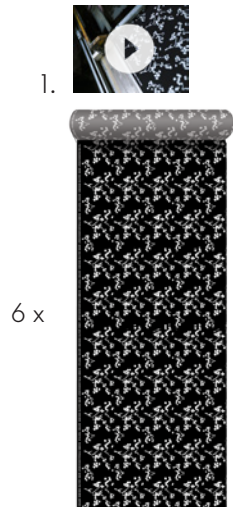
5.



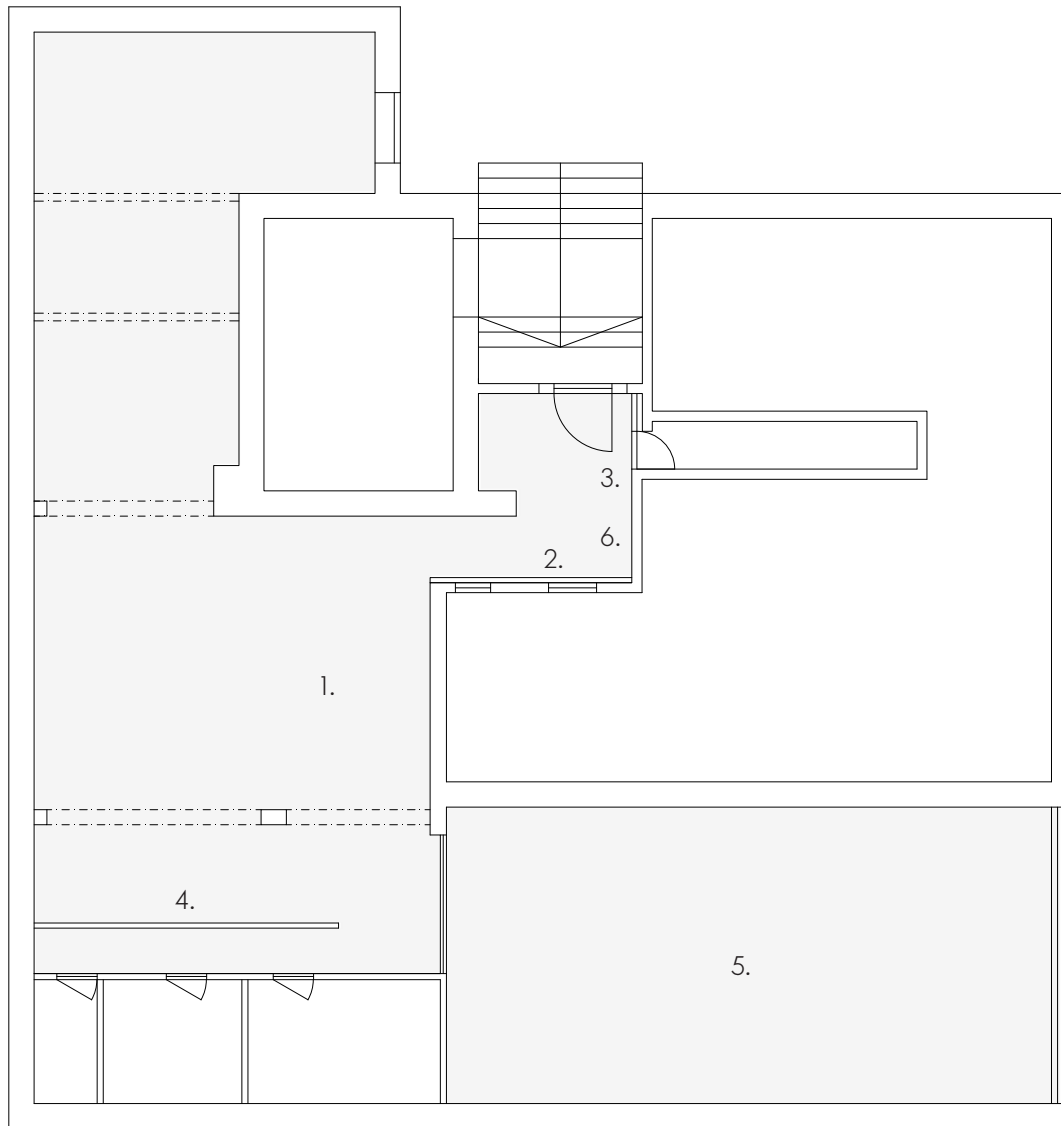
6.



- 1. AINO AALTO
- Kirsikankukka fabric
- 2. BUAISOU
- Aizome Stool
- 3. AKIRA MINAGAWA
- Book
- 4. COMPANY
- Secrets of Finland
- 5. KOICHI FUTATSUMA
- Kago Bench
- Oke Stool
- 6. JO NAGASAKA
- Coloring



1. AINO AALTO
  - Kirsikankukka fabric x 20 m
  - Production Video
2. BUAISOU
  - Aizome Stool x 20
  - Production Video
3. AKIRA MINAGAWA
  - Book x 500
  - Original Drawings
  - Creation Video
4. COMPANY
  - Secrets of Finland 7 x 5
  - Original Drawings
  - Creation Video
5. KOICHI FUTATSUMA
  - Kago Bench M x 1
  - Kago Bench M x 1
  - Oke Stool High x 1
  - Oke Stool x 1
6. JO NAGASAKA
  - Coloring Stool 3 x 3
  - Coloring Bench 3 x 3
  - Coloring Tea Trolley x 1



IMPROVEMENT WORK:



1. NEW FLOORING

- All public parts excluding exhibition space
- Maximum thickness 3 mm
- Area 70 m<sup>2</sup>
- Tarket XXX or similar

2. TEMPORARY DRYWALL

- Masking unwanted doors
- 4000 x 3600 mm
- Logo / signalétique

3. TEMPORARY DRYWALL

- With lockable hinged door like wall
- 1500 x 3600 mm

4. TEMPORARY DRYWALL

- Masking unwanted views
- 6000 x 3600 mm

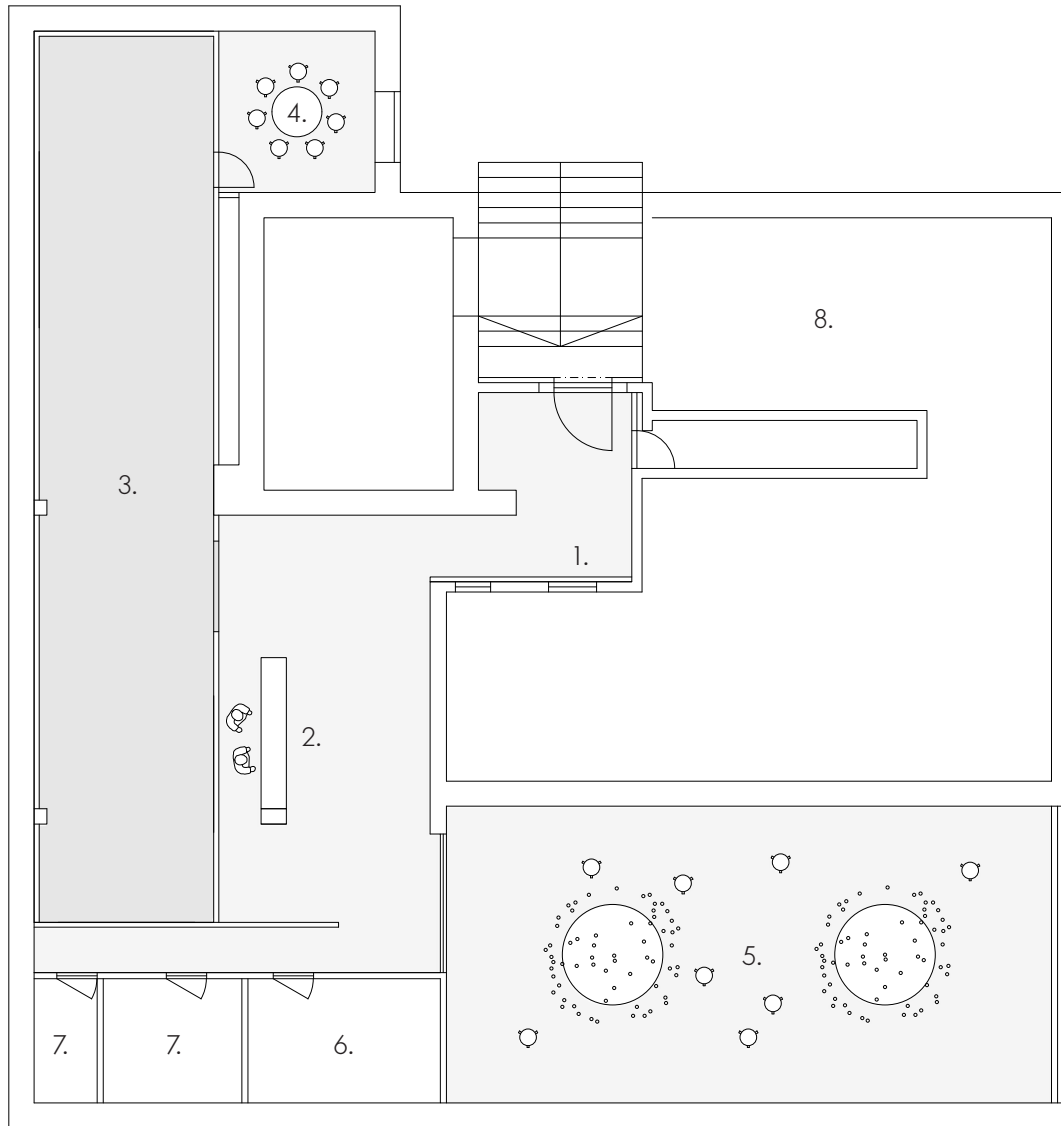
5. FRONTS FOR PLANTERS

- Reorganizing existing plants and adding new ones

6. MIRRORS

- Removed temporarily

Gallery 1:150



1. SIGNALETIQUE

- Visible from the street

2. RECEPTION / INFO POINT

- Counter with lockable storage
- Power outlet

3. EXHIBITION SPACE

- Walls, floor, ceiling in same material
- Room high 2600 mm

4. MEETING ROOM

- Table, chairs, lighting

5. TERRACE

- Plants
- Stools

6. CATERING

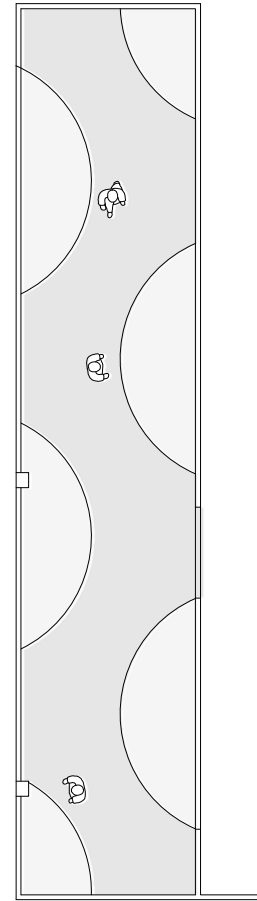
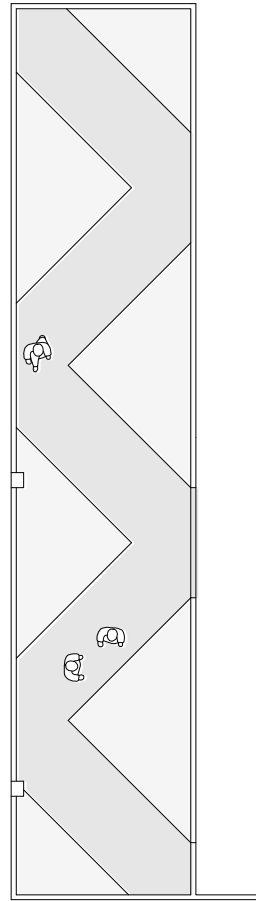
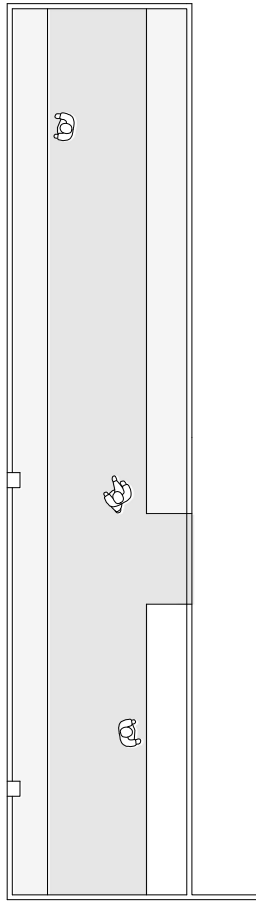
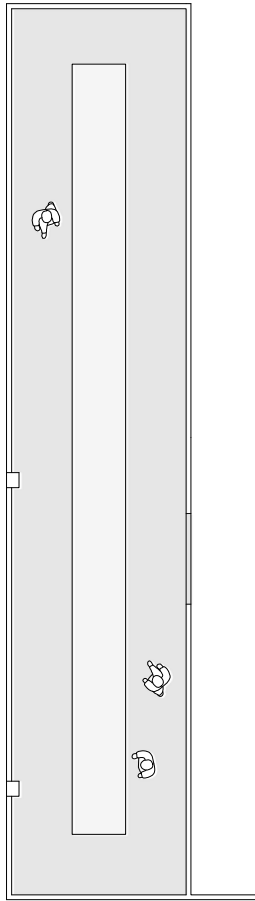
7. BATHROOM

8. STORAGE

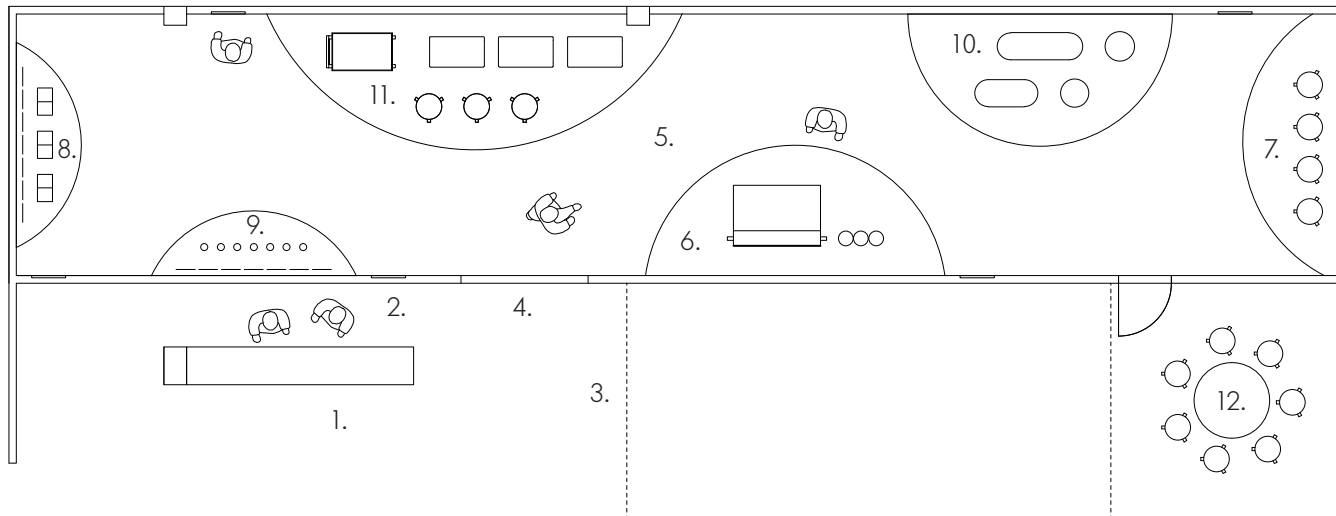
- Catalogs
- Packaging

Program 1:150





Circuit 1:150



1. RECEPTION / INFO DESK

2. ARTEK LOGO

3. INTRODUCTION TEXT

· Stencil sticker on wall

4. ENTRANCE

· Wall heights 3,6 m

· Entrance width 160 cm

· Wall panelled on both sides

5. EXHIBITION SPACE

· d. 3,6 x w. 17,7 x 2,6 m = 65 m<sup>2</sup>

· All surfaces in same material

6. AINO AALTO

· ø 4000, d.1700, h.600 mm

7. BUAISOU

· ø 4000, d. 1400, h. 400 mm

8. AKIRA MINAGAWA

· ø 3000, d.850, h. 800 mm

9. COMPANY

· ø 3000, d.850, h. 800 mm

10. KOICHI FUTATSUMA

· ø 3500, d.1750, h.400 mm

11. JO NAGASAKA

· ø 6000, d.1800, h.400 mm

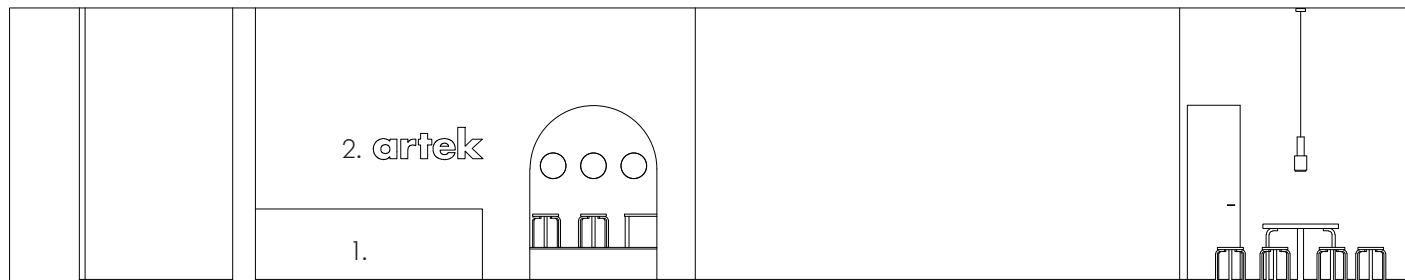
12. MEETING ROOM

· Hinged lockable door

· No frame, surface like walls

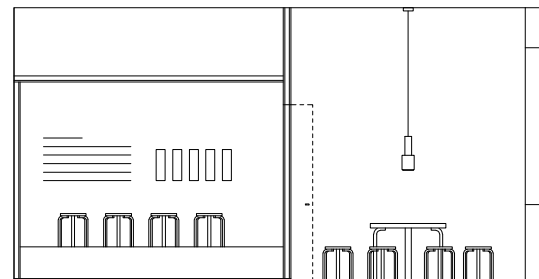
· Wall panelled on both sides

Exhibition Plan 1:100



4.

12.



7.

12.



1. RECEPTION / INFO DESK

- 3000 x 500 x 900 mm

2. ARTEK LOGO w. 1450 mm

3. INTRODUCTION TEXT

- Stencil sticker on wall

4. ENTRANCE

- Wall heights 3,6 m

- Entrance width 160 cm

- Wall panelled on both sides

5. EXHIBITION SPACE

- d. 3,6 x w. 17,7 x 2,6 m = 65 m<sup>2</sup>

- All surfaces in same material

6. AINO AALTO

- ø 4000, d.1700, h.600 mm

7. BUAISOU

- ø 4000, d. 1400, h. 400 mm

8. AKIRA MINAGAWA

- ø 3000, d.850, h. 800 mm

9. COMPANY

- ø 3000, d.850, h. 800 mm

10. KOICHI FUTATSUMA

- ø 3500, d.1750, h.400 mm

11. JO NAGASAKA

- ø 6000, d.1800, h.400 mm

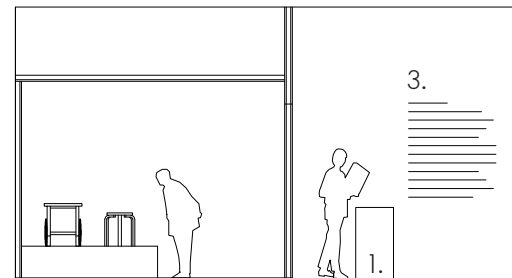
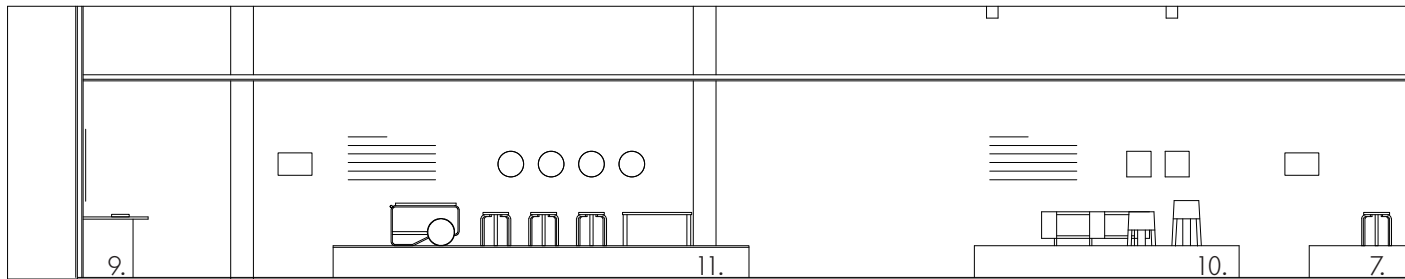
12. MEETING ROOM

- Hinged lockable door

- No frame, surface like walls

- Wall panelled on both sides

Exhibition Section 1:100



1. RECEPTION / INFO DESK
  - 3000 x 500 x 900 mm
2. ARTEK LOGO w. 1450 mm
3. INTRODUCTION TEXT
  - Stencil sticker on wall
4. ENTRANCE
  - Wall heights 3,6 m
  - Entrance width 160 cm
  - Wall panelled on both sides
5. EXHIBITION SPACE
  - d. 3,6 x w. 17,7 x 2,6 m = 65 m<sup>2</sup>
  - All surfaces in same material
6. AINO AALTO
  - ø 4000, d.1700, h.600 mm
7. BUAISOU
  - ø 4000, d. 1400, h. 400 mm
8. AKIRA MINAGAWA
  - ø 3000, d.850, h. 800 mm
9. COMPANY
  - ø 3000, d.850, h. 800 mm
10. KOICHI FUTATSUMA
  - ø 3500, d.1750, h.400 mm
11. JO NAGASAKA
  - ø 6000, d.1800, h.400 mm
12. MEETING ROOM
  - Hinged lockable door
  - No frame, surface like walls
  - Wall panelled on both sides

## Exhibition Section 1:100

A.



A.



B.



C.



#### OPTION A

##### VALCHROMAT BROWN

- Coloured homogenous wood fiber,
- Big board size 3750 x 1250
- Allows wall and ceiling elements to be made from one piece
- Finishing matta lacquer

##### FLOOR

- 19 mm sheet, no structure
- CNC cut grooved tongue

##### FRONT and

##### MEETING ROOM WALL

- LVL Beam structure
- 12 mm Valchromat on both sides

##### CEILING and WALL ELEMENT

- LVL Beam structure
- 12 mm Valchromat on one side

##### OPTION B CHIPBOARD

- Max. size 2440 x 1250 mm

##### OPTION C MDF

- Available 3660 x 1850 mm
- Research ongoing

## Material Options

## PRINCIPLES

- Even light on all surfaces
- No strong shadows
- Light source LED ( photography )
- Colour temperature 3000 K

### OPTION A

- Surface mounted track
- Small or flat LED Spots
- Track

A. 1 x 15 m

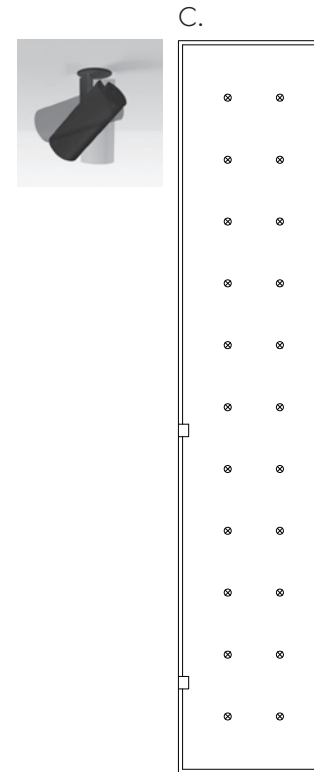
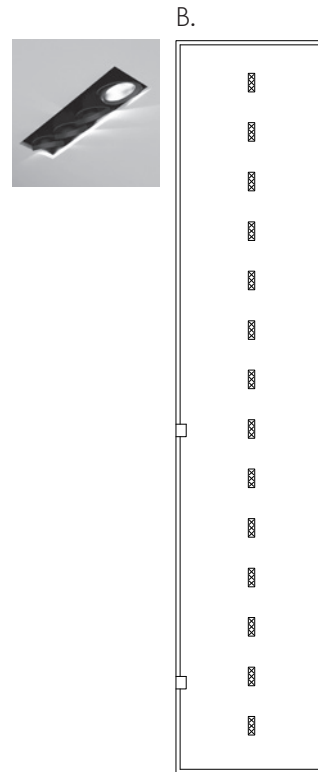
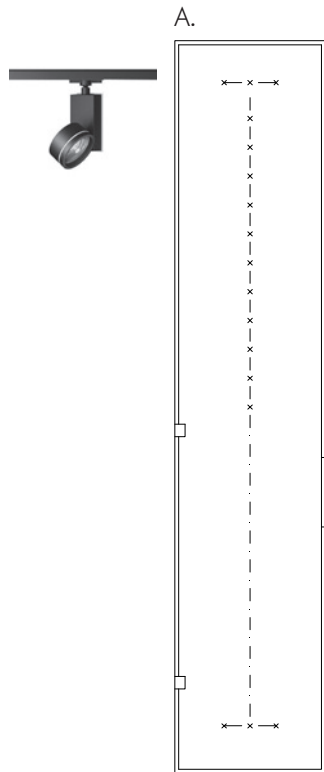
B. 2 x 1,5 m

### OPTION B

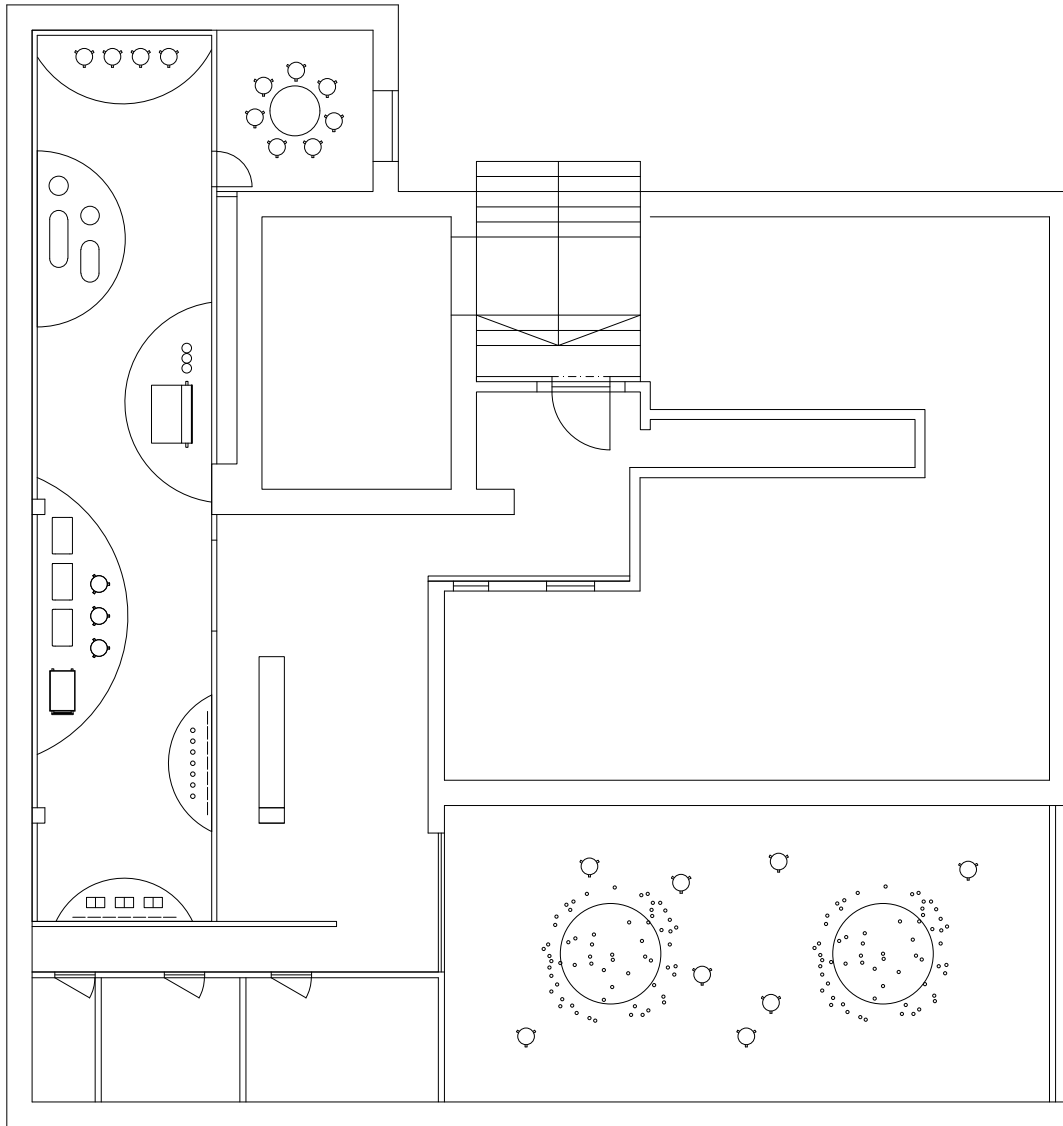
- Surface mounted or built in spots x 14
- Adjustable spots in three directions
- Distance from wall 1,7 m
- Room height 2,6 m

### OPTION C

- Adjustable built in spots x 22
- Distance from wall 1,1 m
- Room height 2,6 m



## Lighting Options



TEA CE  
 • Stool 60 x 30

BREAKFAST  
 • Stool 60 x 28  
 • Table 90C x 7

MEETING ROOM  
 • Chair x 8  
 • Table x 1

Events 1:150



FIN-JPN Friendship Exhibition